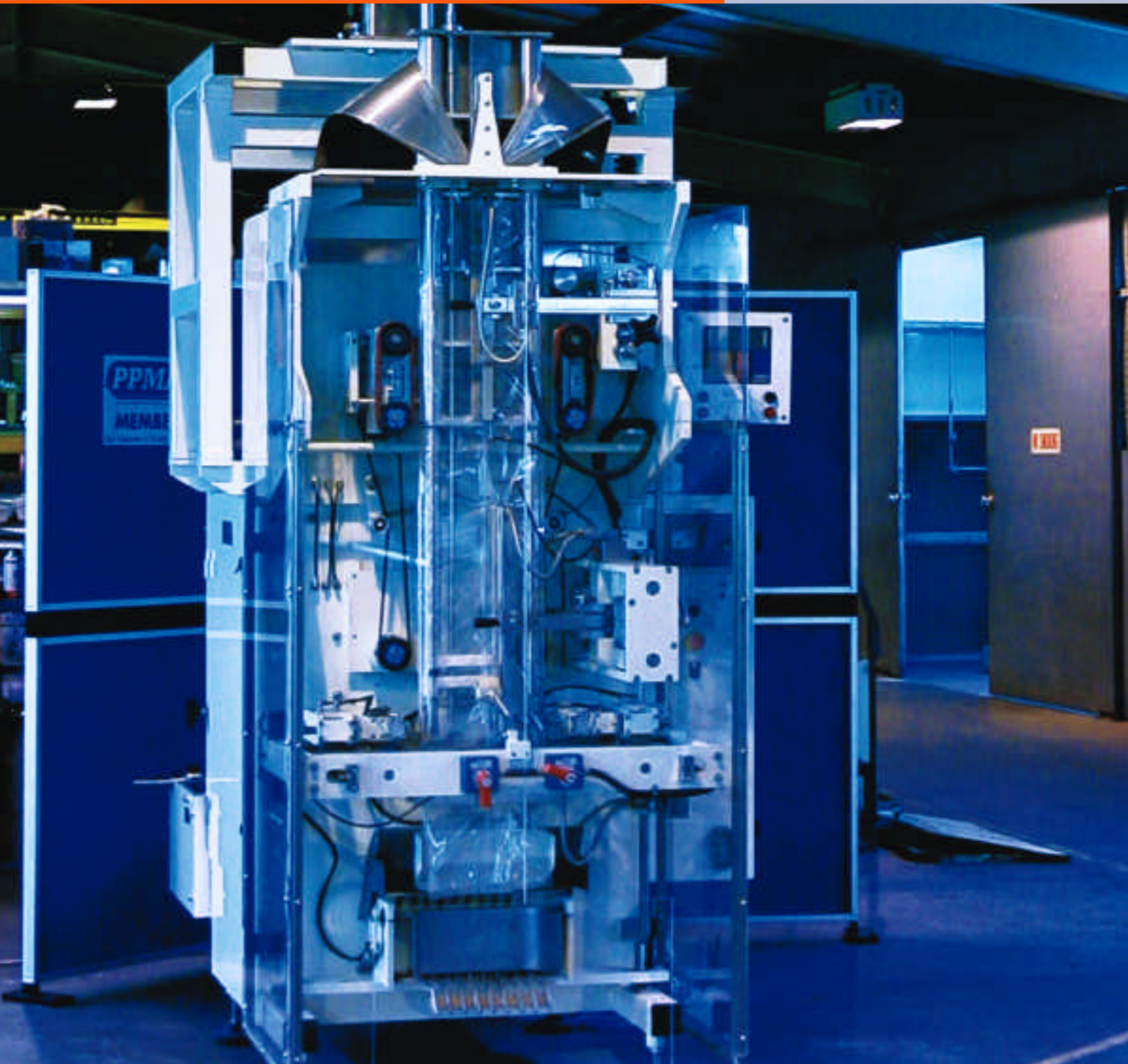


GV5

vertical form fill seal machine

Automatic vertical form fill and seal packaging machine

Suitable for packing confectionery, fresh and frozen foods, granules, liquids, pulses, cereals, electrical and pharmaceutical products, coins and hardware components.



**GAINSBOROUGH
ENGINEERING COMPANY**
AUTOMATIC PACKAGING MACHINERY ENGINEERS

Long Wood Road
Corringham Road Industrial Estate
Gainsborough Lincolnshire UK DN21 1QB

Telephone ++44 (0)1427 617677
Facsimile ++44 (0)1427 810443
Email sales@gains-eng.co.uk
Website www.gains-eng.co.uk

GV5

vertical form fill seal machine

General Description

Manufactured in our Gainsborough factory the GV5 packaging machines feature full programmable logic control of all GV5 machine functions - bag length, print registration, over printer, product call and no product - no bag.

The PLC also monitors jaw obstructions, film breakage, packaging material run out and safety guard circuits.

CE certified.

Features

- Option of painted or full stainless steel frame, parts and bearings, except where weight dictates use of anodised aluminium and bought in items are not available in such materials. (Usually specialist electrical or pneumatic items).
- Heat sealable jaws running on hardened shafts and linear bushes for long and trouble-free life.
- All product contact parts stainless steel.
- Mechanical/inverter/clutch Brake controlled intermittent film drive.
- Belts with encoder feed back for measurement of length of pack.
- Industry standard 'brand' named products used when not manufactured in-house.
- Touch Screen PLC control of all machine functions with product codes for ease of product changeovers.
- Photo-electric cell registration.
- Film run out detection.
- Jaw obstruction detection.
- Totalising/batch counting facility.
- Interfaces easily with auger, weighers, liquid and counting systems.
- Integral set up steps.
- Machine options:
 - Gussetting
 - Block bottom
 - Bag supports
 - Gas flushing
 - Static eliminators
 - Hole punch
 - Euroslot
 - Overprinting
 - Labeller
 - Take away conveyor
 - Rotary table

Technical Features

Packing Speeds up to 30/minute subject to bag length, suitability of packing material, I feed system and type of product to be packed.

Maximum Pack Size 600mm wide x 600mm long.

Minimum Pack Size 250mm wide x 200mm long.

Double Bag Length Facility available. (Subject to suitable bag discharge arrangements).

Relatively low product drop for fragile products.

Machine dimensions:

Width	1640 mm
Height	2800 mm
Deep	2620 mm
Weight	1500 kilogrammes.
Air supply	80psi, 5 bar
Air Consumption	20 - 40 cubic ft. Dependant on machine speed and specifications.

